

## 95 Express Monthly Operations Report – September 2014

### General

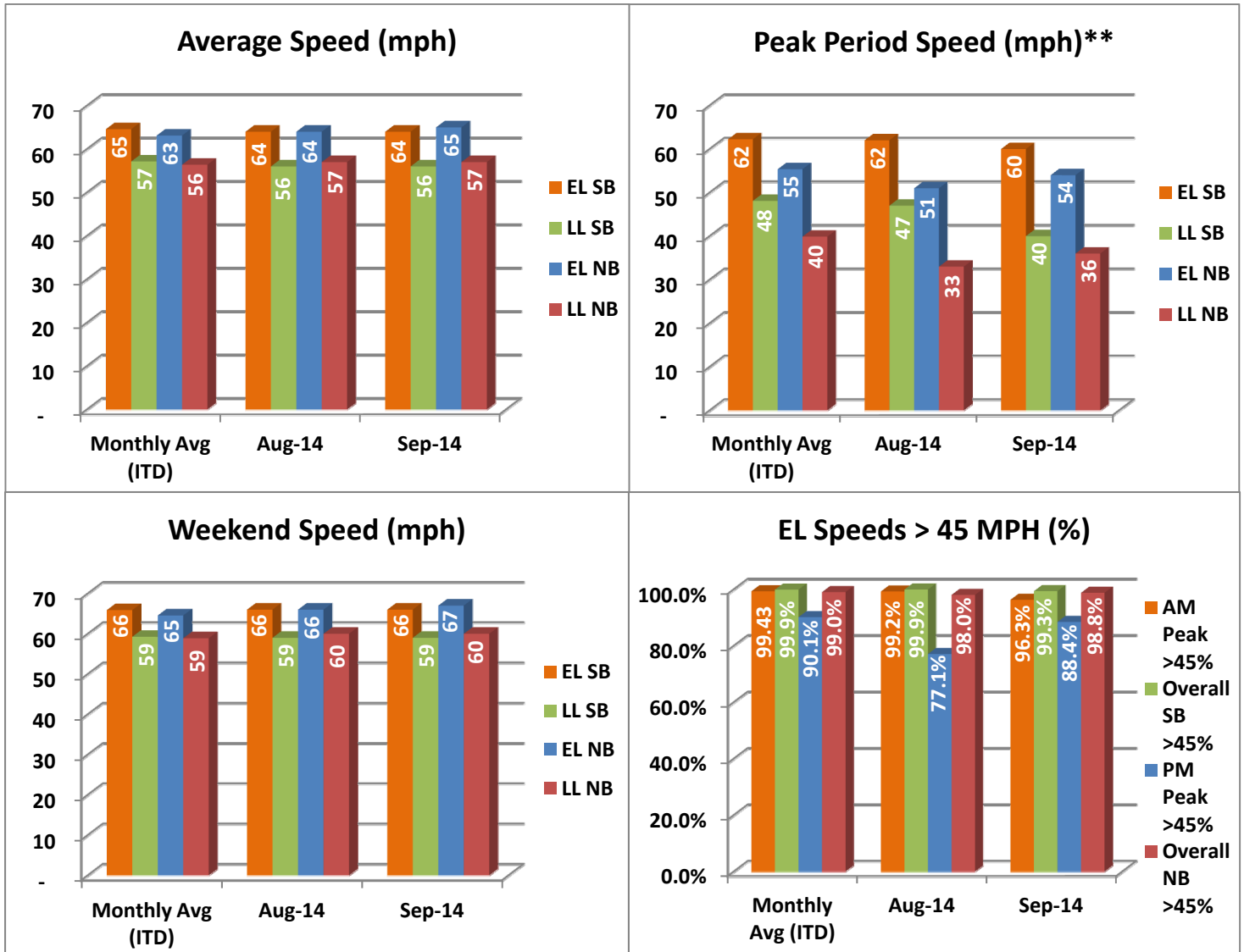
In total, the 95 Express Lanes:

- ✓ Serviced 1,627,574 vehicle trips in September 2014 (15.9M trips in 2014 to date), bringing the total since opening (September 5, 2008) to approximately 104.2 million trips.
- ✓ Had estimated monthly toll revenue of \$1.82 million in September 2014 (\$16.8M in 2014 to date), bringing the total revenue to date to approximately \$88.0 million.
- ✓ Increased to a total of 9,163 registered vehicles, resulting in 59,376 toll exempt trips.

<u>September 2014 Statistics</u>	<u>Southbound</u>		<u>Northbound</u>			
<b>Total Trips</b>	816,266		811,308			
<b>Exempt Trips</b>	29,865		29,511			
<b>Revenue</b>						
	\$920,436		\$903,802			
<b>Tolls</b>						
- Range***	\$0.00 - \$9.50		\$0.00 - \$10.50			
- Avg. Weekday	\$1.44		\$1.42			
- Avg. Peak Period**	\$2.35		\$2.98			
- Avg. Weekend	\$0.49		\$0.46			
- Avg. Off Peak	\$1.13		\$0.88			
- 85 <sup>th</sup> Percentile Weekday	\$3.25		\$2.75			
<b>Volume (veh)</b>						
	<b>EL</b>	<b>LL</b>	<b>EL</b>	<b>LL</b>		
- Avg. Weekday	30,346	102,751	29,832	101,246		
- Avg. Peak Period**	8,874	17,748	8,062	17,816		
<b>Speed (mph)</b>						
	<b>EL</b>	<b>LL</b>	<b>Δ</b>	<b>EL</b>	<b>LL</b>	<b>Δ</b>
- Avg. Overall	64	56	8	65	57	8
- Avg. Peak Period**	60	40	20	54	36	18
<b>Operated Above 45 MPH</b>						
	99.3%		98.8%			
<b>Remained Open to Motorists</b>						
	76.8%		89.1%			
<b>Closed due to Planned Construction</b>						
	19.5%		6.8%			
<b>Closed due to Non-recurring Events</b>						
	3.8%		4.1%			
<i>EL (Express Lanes); LL (Local Lanes)</i> **Peak Period is defined as 6-9 AM (southbound) and 4-7 PM (northbound). ***Maximum Toll Increase started in March 2014; from \$1.00 per mile, maximum, to \$1.50 per mile.						

## Operations/Traffic Statistics - Speed Data

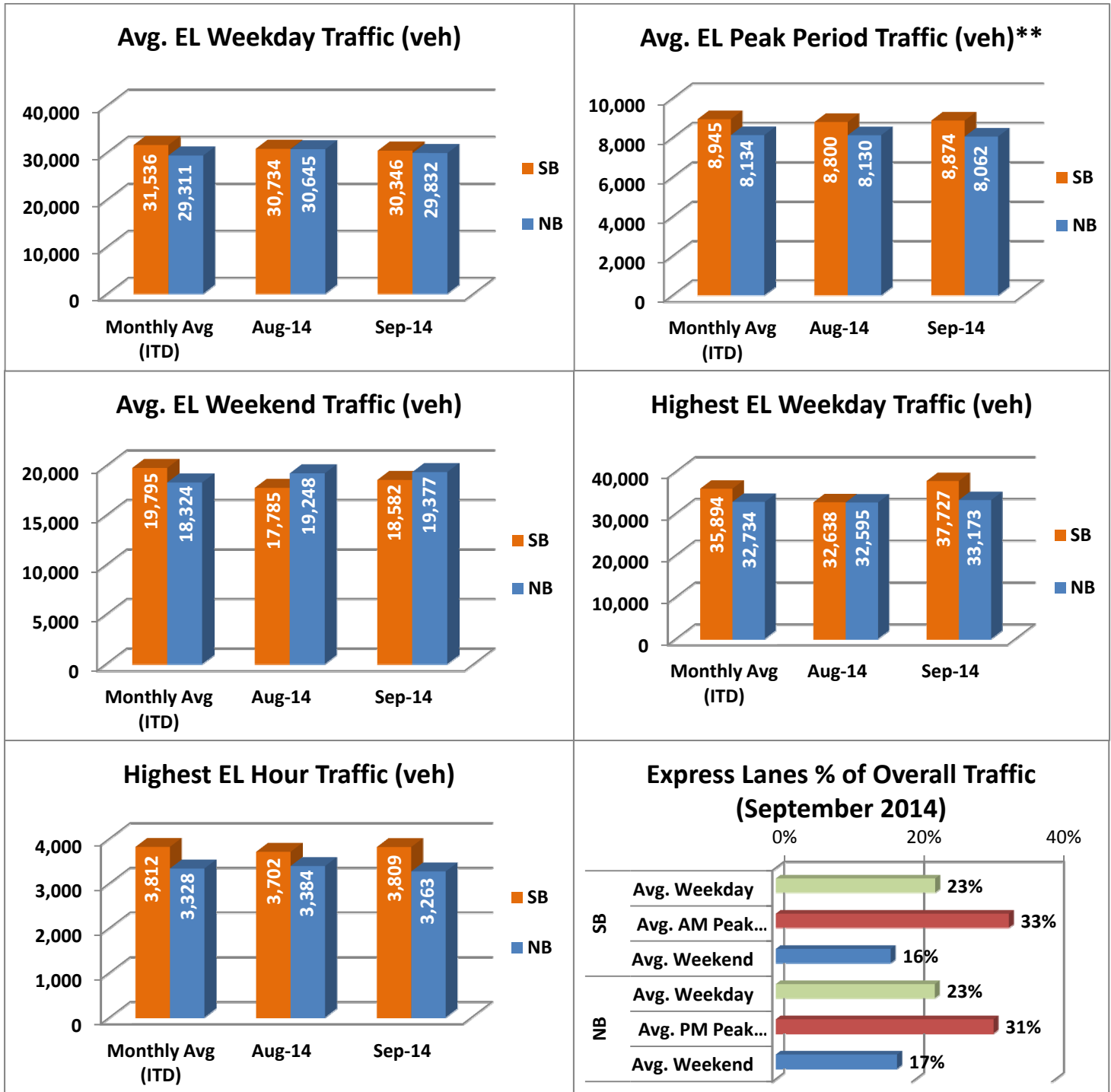
\*\* Peak Period is defined as 6-9 AM (southbound) and 4-7 PM (northbound).



NOTE: ITD = Inception to Date

## Operations/Traffic Statistics - Volume Data

\*\* Peak Period is defined as 6-9 AM (southbound) and 4-7 PM (northbound).

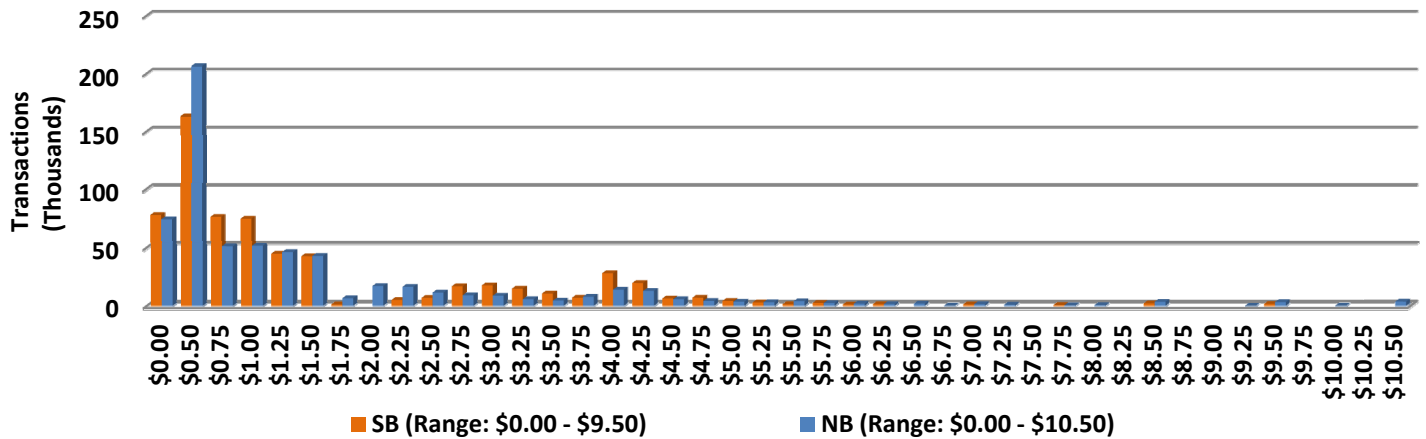


NOTE: ITD = Inception to Date

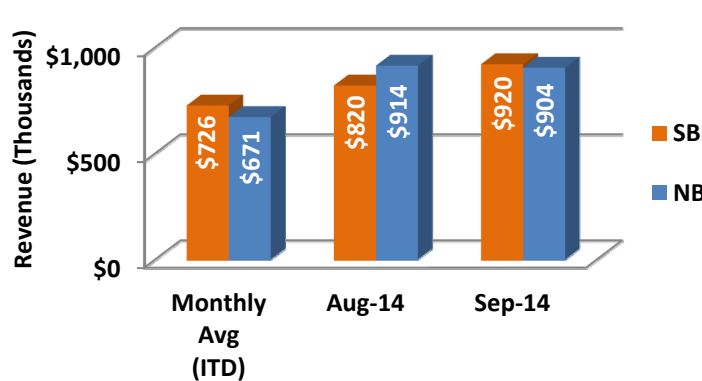
## Revenue/Tolls Statistics

\*\* Peak Period is defined as 6-9 AM (southbound) and 4-7 PM (northbound). Maximum toll increase started March 2014; from \$1.00 per mile, maximum, to \$1.50 per mile.

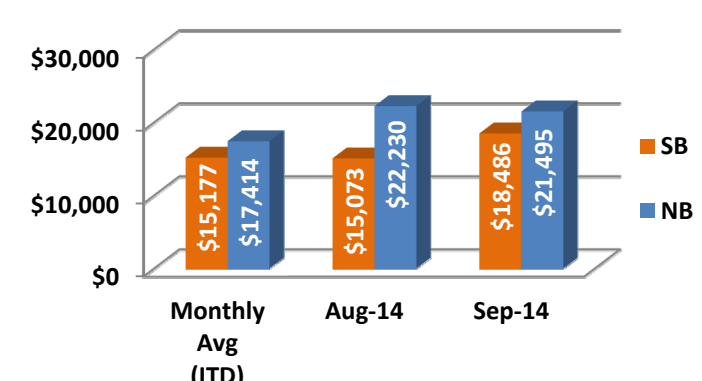
**EL Weekday Total Transactions by Toll Amount Charged (September 2014)**



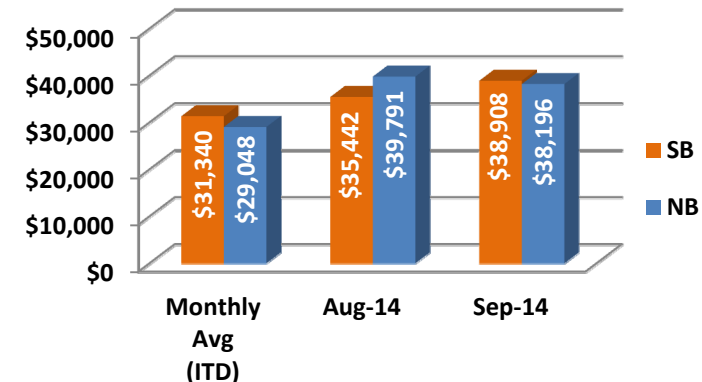
**Monthly EL Revenue**



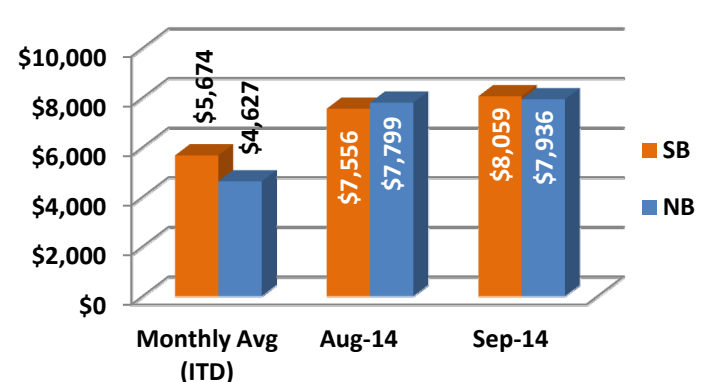
**Avg. EL Peak Period Revenue\*\***



**Avg. EL Weekday Revenue**



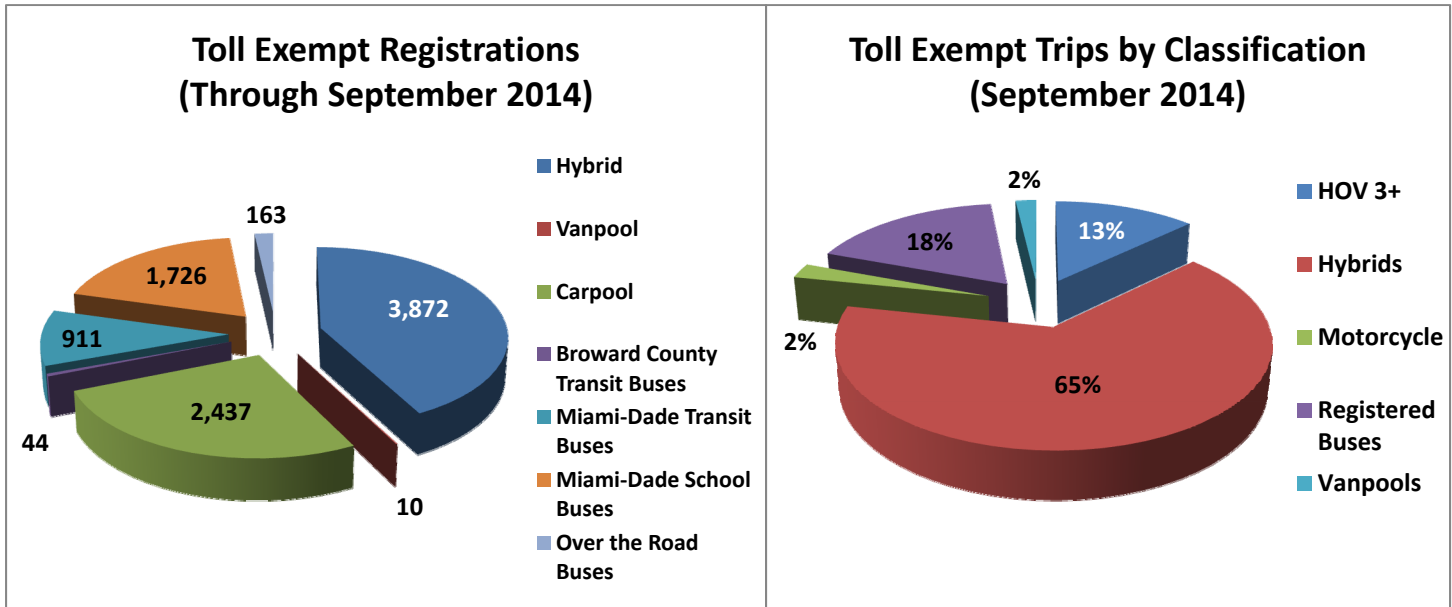
**Avg. EL Weekend Revenue**



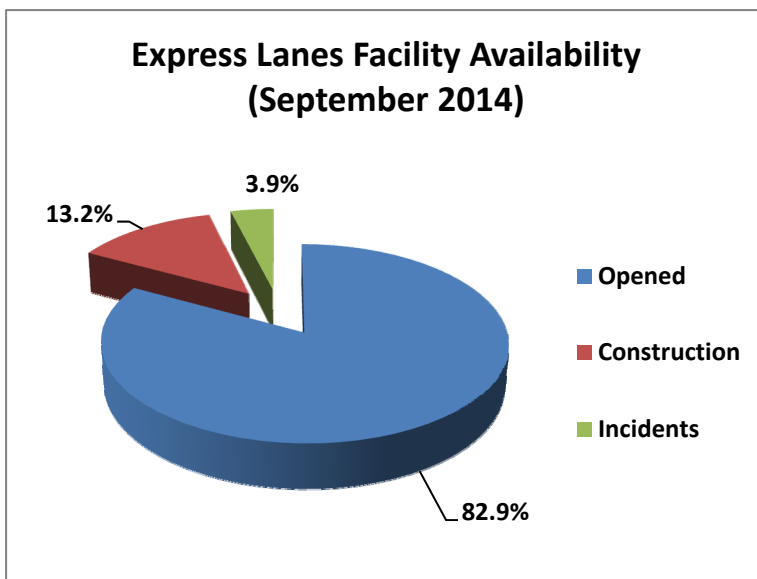
NOTE: ITD = Inception to Date

## Registrations—Toll Exempt Trips

The total registrations through September 2014 increased to 9,163. The 59,376 Toll Exempt Trips for this month are shown by classification below.



## Facility Availability



The entire 95 Express lanes (both directions) were open to motorists 82.9% of the time, while closed 13.2% due to 32 planned construction/ maintenance events (each lasting approximately 5 hours, 55 minutes in duration, on average) and 3.9% due to 198 non-recurring events (each lasting approximately 17.1 minutes in duration, on average).